



Form with Substance

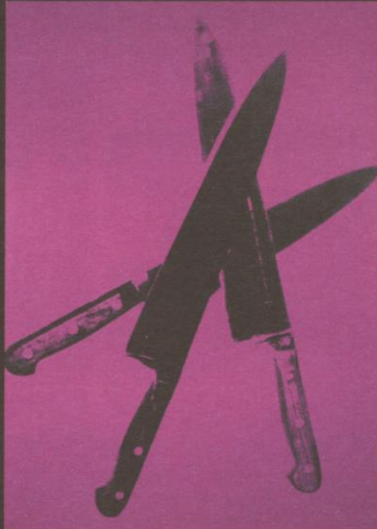
PAD looks to make it lucky number seven with this year's exhibition, brought to you from Berkeley Square. **MIKE GIBSON** runs the rule over some standout pieces



◀ **Turquoise
Glassweaver
Vessel, 2012, £6,600**

Tobias Mohl

This brilliant blue orb comes from renowned Danish glassblower Tobias Mohl. This striking piece exemplifies his predilection for combining Venetian techniques with a modernist Scandinavian aesthetic.
*Courtesy of Adrian Sassoon;
adriansassoon.com*



▲ Knives, 1981-82, £2m

Andy Warhol

This bold, minimalist Warhol is on the market for £2m – an understandable premium for an original. Like many of the works in the series, this arresting piece foregrounds everyday objects whose implicit sense of violence represents the dark side of Warhol's vision of America. Would also make a great present for a chef.
Courtesy of Galerie Pascal Lansberg, Paris; galerie-lansberg.com

▼ The Rest, 2013, £11,000

Ayala Serfaty

The Iranian artist Ayala Serfaty considers each of her works "a meditation on the human condition". Given the brightness, complexity and unpredictability of this piece from her *Soma* series, we think it embodies a hedgeie's condition rather well.

The lighting sculpture is made from glass rods, polymer membrane and ceramic – a real light fantastic.

Courtesy of Galerie BSL, galeriebsl.com



► **Composition, 1970, POA**

Joan Miró

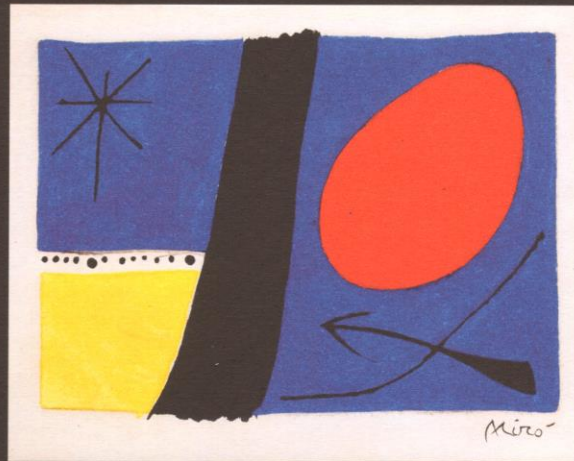
This piece is a classic example of the surrealism which dominated Miró's paintings, as well as his outlook on life in general. The work's sparse composition and use of primary colours make it bold, bright and instantly recognisable, while retaining the sense of childlike innocence which has earned the Catalan painter such acclaim.
Courtesy of Jean-François Cazeau; galeriejfcazeau.com

▼ **Kubu, 2009, £40,000**

Satyendra Pakhalé

Indian sculptor Pakhalé spends his life straddling the line between architecture and industrial design, showcased here with this beautiful hand-carved chair.

Flowing curves and contrasting textures provide a fascinating blend of ergonomics and beguiling, fluid form.
Courtesy of Ammann Gallery; ammann-gallery.com



PAD London 2013

16-20 October

The seventh annual Pavilion of Art + Design London exhibition takes place in Mayfair's Berkeley Square this autumn.

It brings together high art, pop art, sculpture and a fresh approach to collectorship – all right on your doorstep.
pad-fairs.com